



Global Partnership
on Marine Litter

The role of IMDOS in supporting the Global Partnership on Marine Litter (GPML) Digital Platform

19 November 2021

Global Challenges & Solutions Needed

From **Duplication and lack of data and information**

↳ To integrated Knowledge and Data

From **Lack of harmonization**

↳ To promoting unified approaches

From **Lack of coordinated action**

↳ To a common framework to develop and implement Action Plans and measure progress

From **Lack of ad hoc and regular collaboration among Stakeholders**

↳ To co-developed solutions

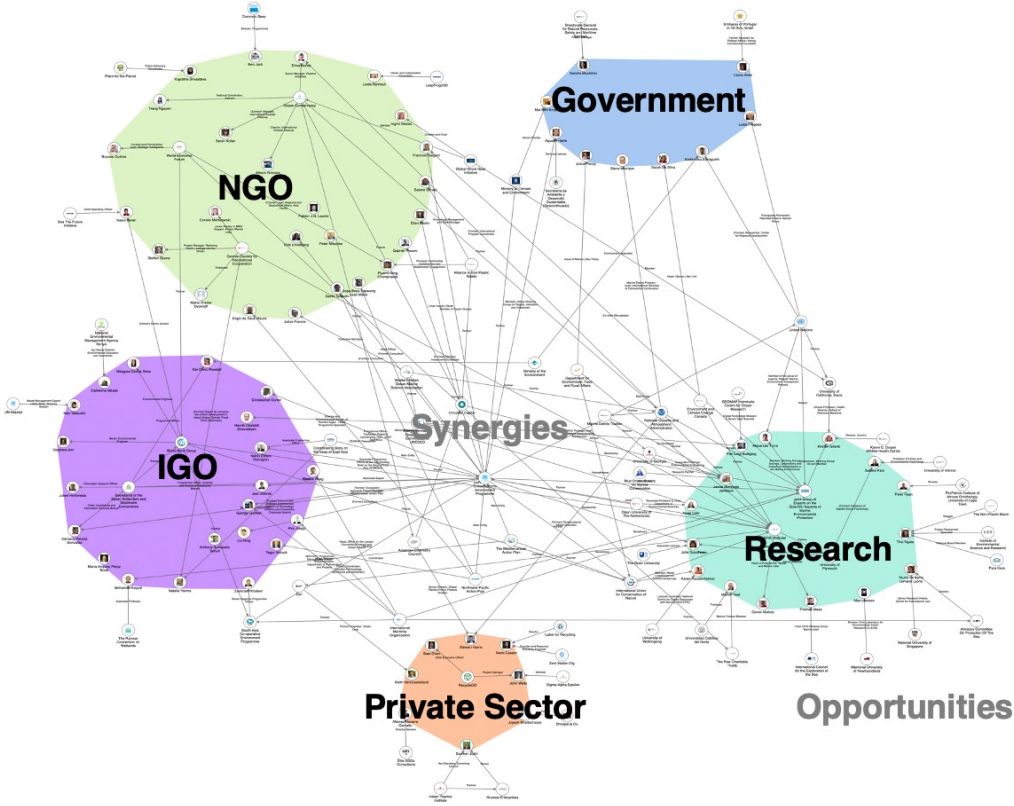
How?

The GPML is working with a wide range of Partners to create a common Digital Platform that brings together curated data, information, and innovative technologies and convenes stakeholders across sectors to give access to all.



Global Partnership
on Marine Litter

Multi-stakeholder Engagement



Global Partnership on Marine Litter



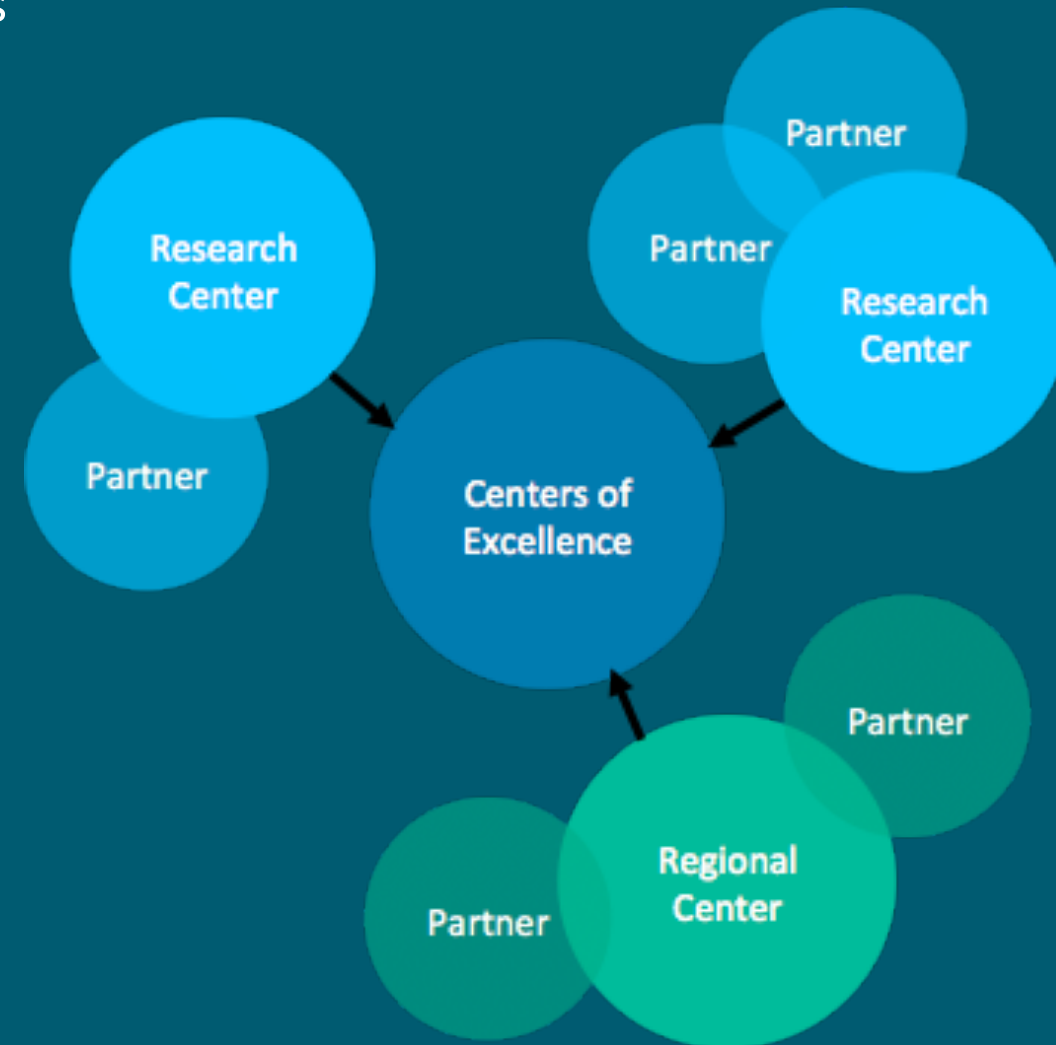
DATA COMMUNITIES

Communities of Practice

- Informal communities who meet regularly to discuss good practices or contribute to a project
- Three types
 - Geographic
 - Topical
 - Cross-cutting

Centers of Excellence

- Formal entities responsible for establishing good practices, contributing to data governance, and creating technical links to the GPML Digital Platform
- Two types
 - Geographic ("Regional Center")
 - Topical ("Research Center")



INDICATORS

- National Source Inventories on Marine Litter and Plastic Pollution
- Identifying and Recommending National source inventories & beyond
- Three-dimension indicators – economy, environment, social
- Working with 8+ countries to pilot the approach
- Join if interested!

NATIONAL SOURCE INVENTORIES & ACTION PLAN WORKFLOW

STEP 1
MAPPING AND
BASELINE STUDY

STEP 2
COORDINATING
MECHANISM AND
STAKEHOLDER
ENGAGEMENT

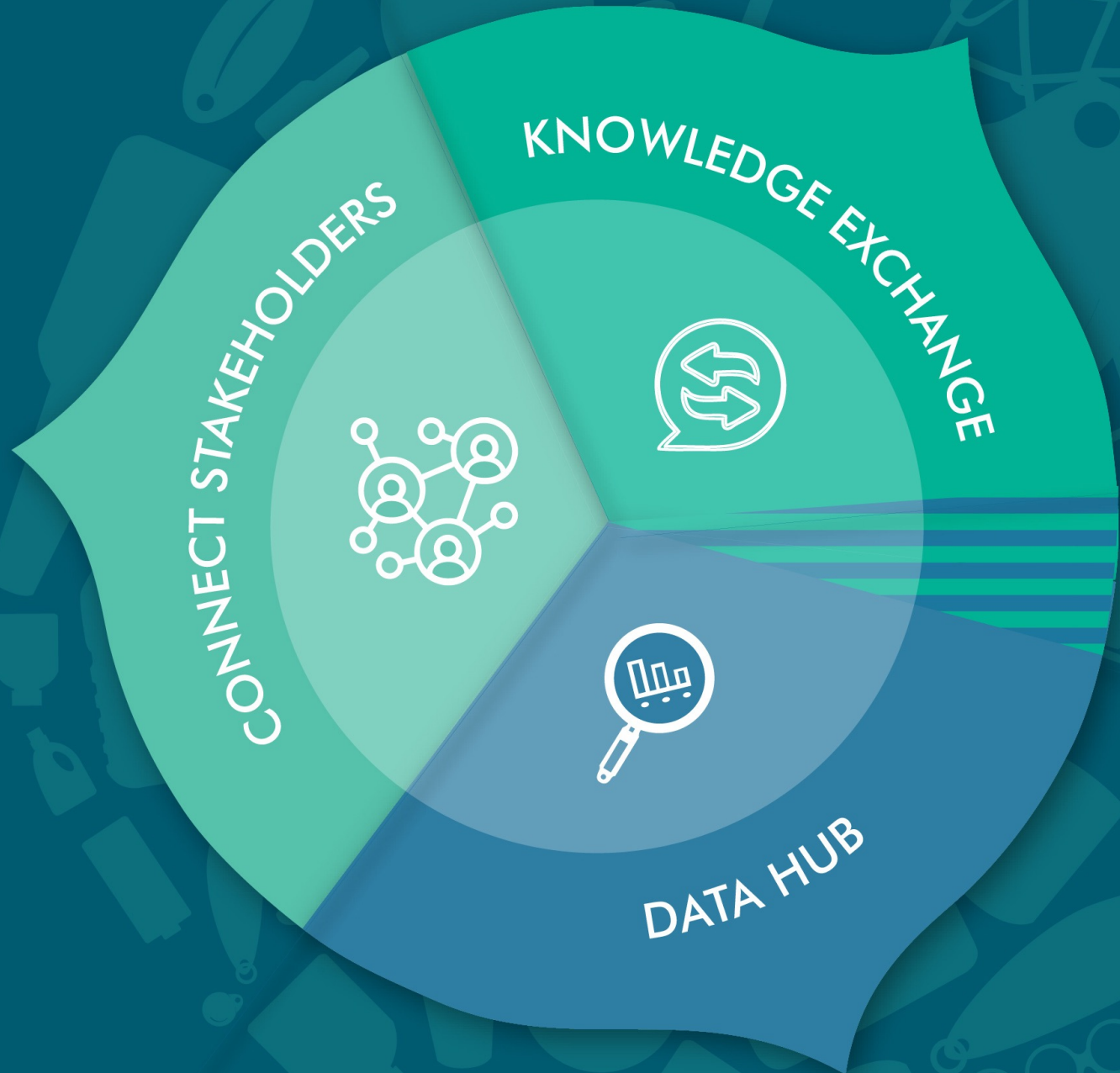
STEP 3
INFORMATION
SHARING

STEP 4
CREATE ACTION PLAN
AND RELATED
SCIENCE-POLICY
PRODUCTS

STEP 5
REPORT ON ACTIONS
AND MEASURE
PROGRESS AND
IMPACT



Global Partnership
on Marine Litter



DATA HUB

Map & Layers

Dashboard & Analytics

Data Catalogue

Data Content

Story Maps

1. Select a topic(s)

2. click below to see

3. to make the sublayer

Notes:

The Data Summary presents a consolidated list of contents available on the GPML Data Hub.

1. Filter Contents by Topic and/or Type;

2. Explore the datasets; and

3. Access the Metadata for each dataset.

Title	Type	Created Date	Modified Date	Categories	Tags	Views	Comments	Data	Metadata
Beach litter coverage in relation to protected areas (EN_MR...									
Beach litter coverage in relation to protected areas (EN_MR...									
Coverage of protected areas in relation to protected areas (ER_MR...									
Coverage of protected areas in relation to protected areas (ER_MR...									

Search for resources and stakeholders

COUNTRY

Find country

MY BOOKMARKS

RESOURCES

- Initiative (378)
- Action Plan (44)
- Policy (276)
- Technical Resource (152)
- Financing Resource (77)
- Event (64)
- Technology (75)

Introduction Challenges & Solutions GPML Data Partnerships

Danish Hydraulic Institute (DHI) & United Nations Environment Program (UNEP)

Many plastic pollution reduction and monitoring programmes are focused on the marine environment. Some of these initiatives include freshwater, but there is no comprehensive understanding of the geographic and topical scope.

The DHI and UNEP partnership utilizes many existing freshwater work platforms, tools and knowledge to...

02 /

03

+ Data Communities

Operational GPML risk and warning system for macro plastic litter



Estimate macro plastic litter load along all major rivers for the next 9 months.

Support national authorities **identify and prioritize:**

- where the problem is
- where it is originating
- how to intervene

Tracking Marine Litter With a Global Ocean Model

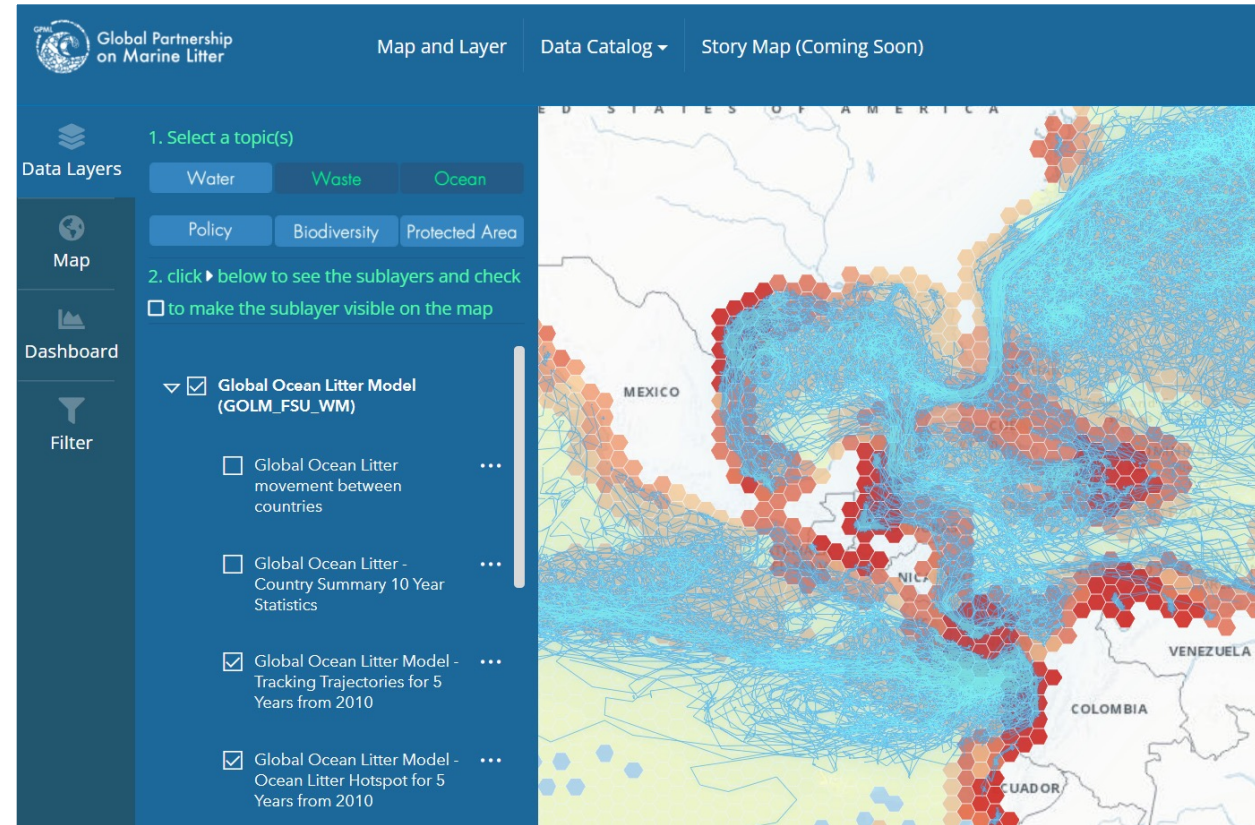
Where Does It Go? Where Does It Come From?

The global marine plastic waste tracking simulations are designed to address the following questions:

1. Where does the marine plastic waste go once released into the ocean?
2. Where does the marine plastic waste found on the coast come from?

Global statistics available from the GPML data hub

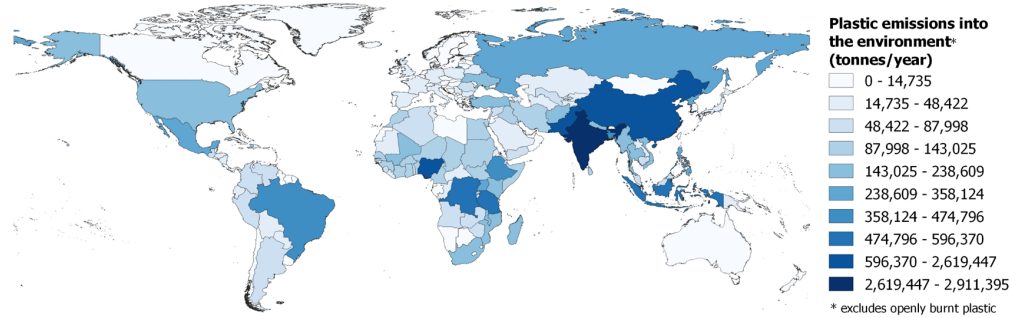
Current work: Development of a probabilistic atlas of stranding time and locations of marine litter originating from the Wider Caribbean Sea region to document a) the location and the type of plastics leaked in the environment, b) travel pathways as a function of seasons, c) where the plastic litter ends up, d) how useful is the model to address infrastructure gaps, and e) how can waste management be strengthened.



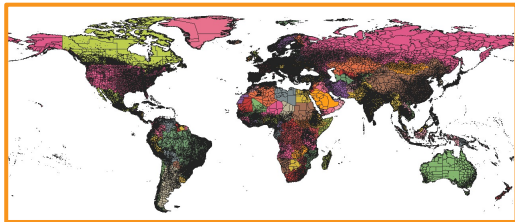
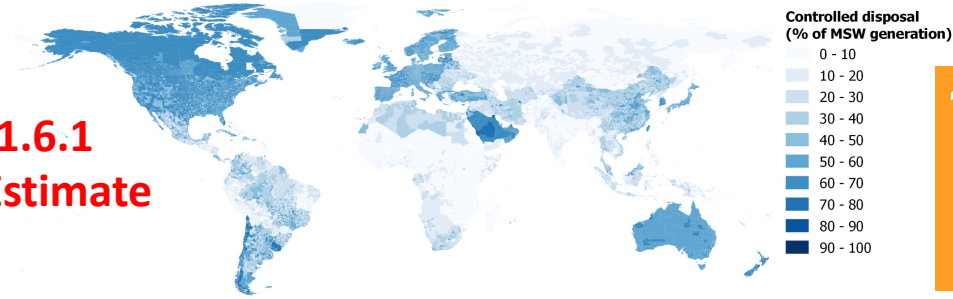
The global marine plastic waste tracking simulations include the following three components:

1. Particle seeding that represents realistically the input of the mismanaged plastic wastes (MPW) into the ocean.
2. High-resolution global ocean circulation **and** wind data.
3. State-of-the-art Lagrangian analysis tool (OceanParcels).

<https://digital-gpmarinelitter.hub.arcgis.com/maps/gpml-community::marine-litter-hotspots-mlhs-uluh-wm/about>



SDG11.6.1
Global Estimate



<https://plasticpollution.leeds.ac.uk/toolkits/>

BETA RELEASE



Global Partnership on Marine Litter



Thank you



Global Partnership on Marine Litter

Global Partnership on Marine Litter (GPML)
unep-gpmarinelitter@un.org

United Nations Avenue, Gigiri
PO Box 30552 – 00100 GPO Nairobi, Kenya

www.gpmarinelitter.org